

# Quick Start Guide

## *GV-3D People Counter V3*





© 2024 GeoVision, Inc. All rights reserved.

Under the copyright laws, this manual may not be copied, in whole or in part, without the written consent of GeoVision.

Every effort has been made to ensure that the information in this manual is accurate. GeoVision, Inc. makes no expressed or implied warranty of any kind and assumes no responsibility for errors or omissions. No liability is assumed for incidental or consequential damages arising from the use of the information or products contained herein. Features and specifications are subject to change without notice.

GeoVision, Inc.  
9F, No. 246, Sec. 1, Neihu Rd.,  
Neihu District, Taipei, Taiwan  
Tel: +886-2-8797-8377  
Fax: +886-2-8797-8335  
<http://www.geovision.com.tw>

Trademarks used in this manual: *GeoVision*, the *GeoVision* logo and GV series products are trademarks of GeoVision, Inc. *Windows* is the registered trademark of Microsoft Corporation.

October 2024

**Scan the following QR codes for product warranty and technical support policy:**



[Warranty]



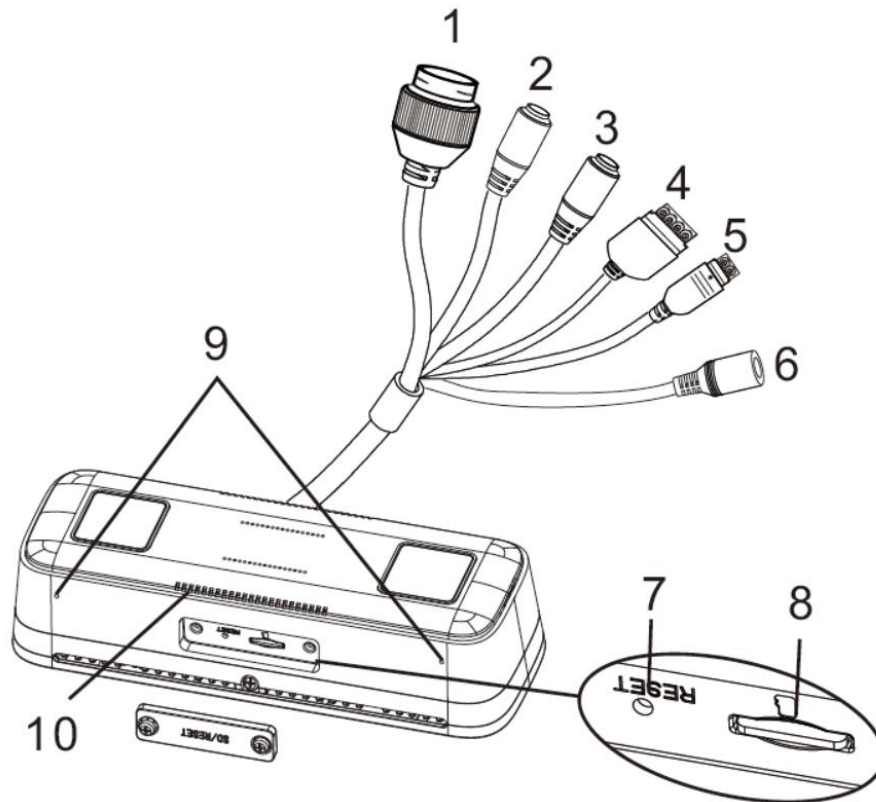
[Technical Support Policy]

## Contents

<b>1. Overview.....</b>	<b>1</b>
1.1 Product Overview .....	1
<b>2. Installation.....</b>	<b>3</b>
2.1 Standard Installation .....	3
<b>3. Accessing the Network Camera .....</b>	<b>5</b>
3.1 Looking Up the Dynamic IP Address.....	5
3.2 Configuring the IP Address .....	7
<b>4. The Web Interface.....</b>	<b>8</b>
<b>5. Upgrading System Firmware .....</b>	<b>9</b>
<b>6. Restoring to Factory Default .....</b>	<b>11</b>
<b>7. Connecting to GV-Web Report .....</b>	<b>12</b>

# 1. Overview

## 1.1 Product Overview



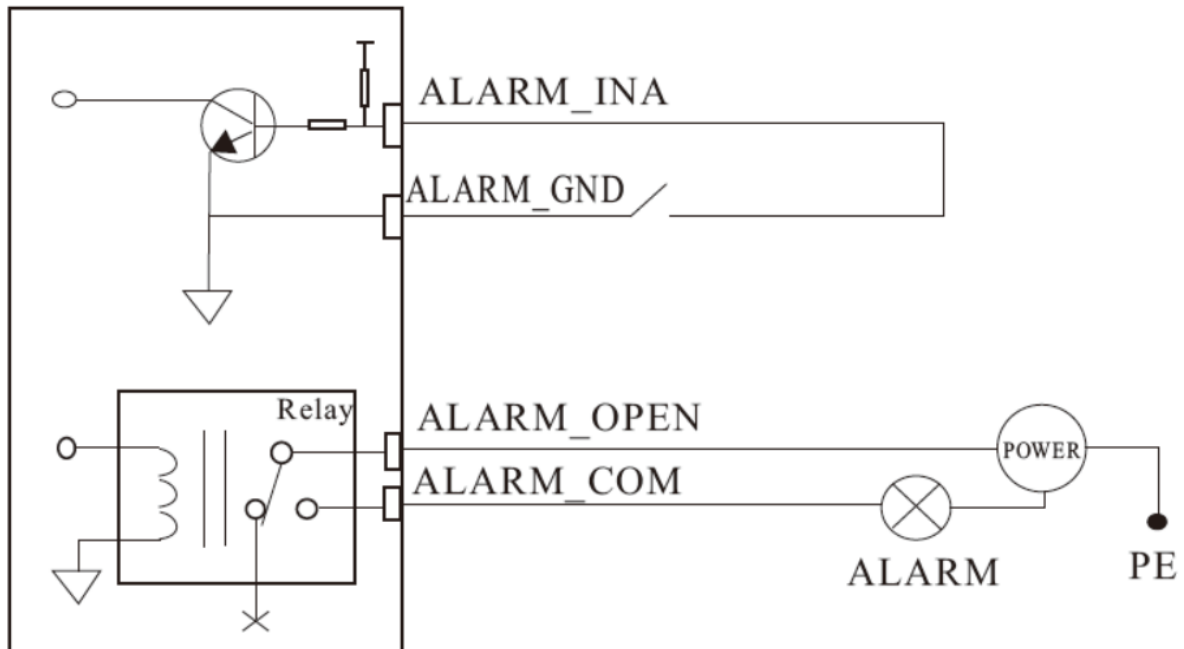
No.	Name	No.	Name
1	Ethernet Port	6	DC 12V Power Connector
2	Audio Input (MIC)	7	Reset Button
3	Audio Output (HP)	8	Micro SD Card Slot
4	Alarm Input/Output	9	Microphone
5	RS-485 Interface	10	Speaker

### Note:

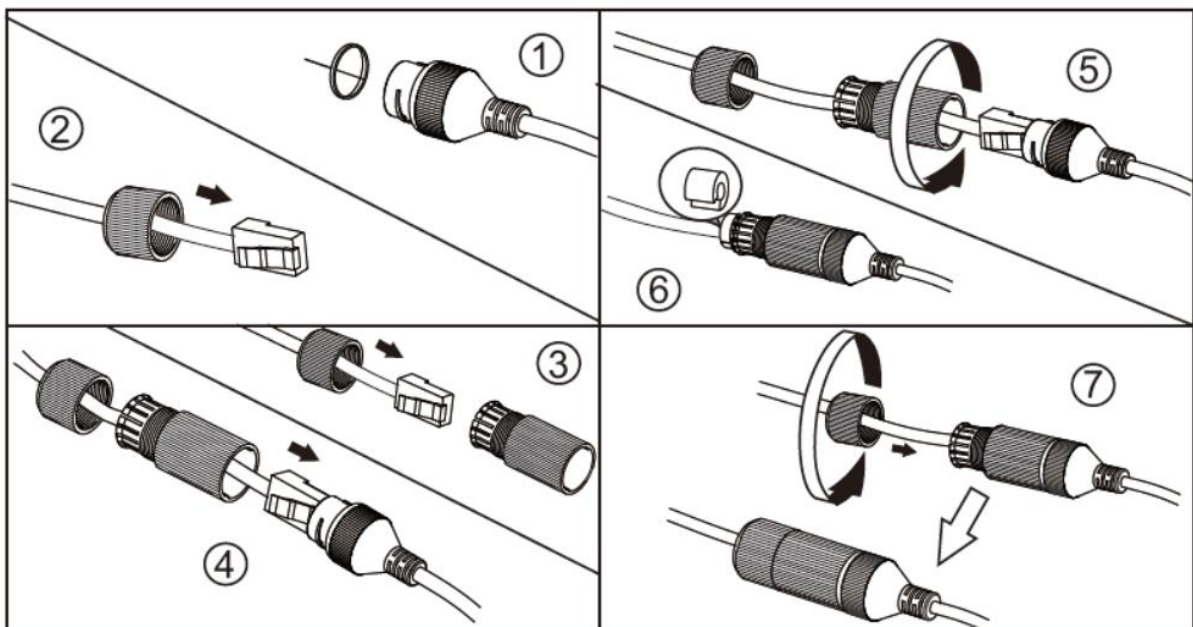
1. It is recommended to install the water-proof connector for outdoor installation.
2. To load default settings, press and hold the reset button for more than 10 seconds

## Connecting Alarm Input / Output

Max. load of the alarm output: 30VDC, 1A



## Connecting Network Cable





## 2. Installation

### 2.1 Standard Installation

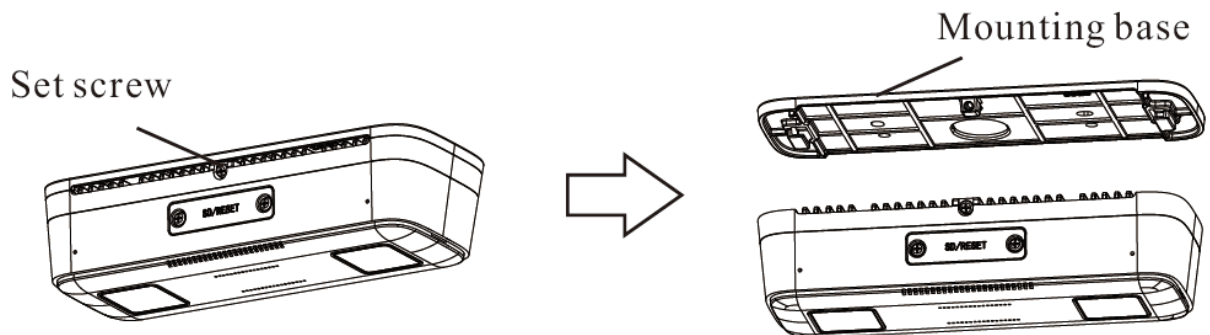
Make sure that the wall or ceiling is strong enough to withstand 3 times the weight of the camera. And install and use the camera in a dry environment.

---

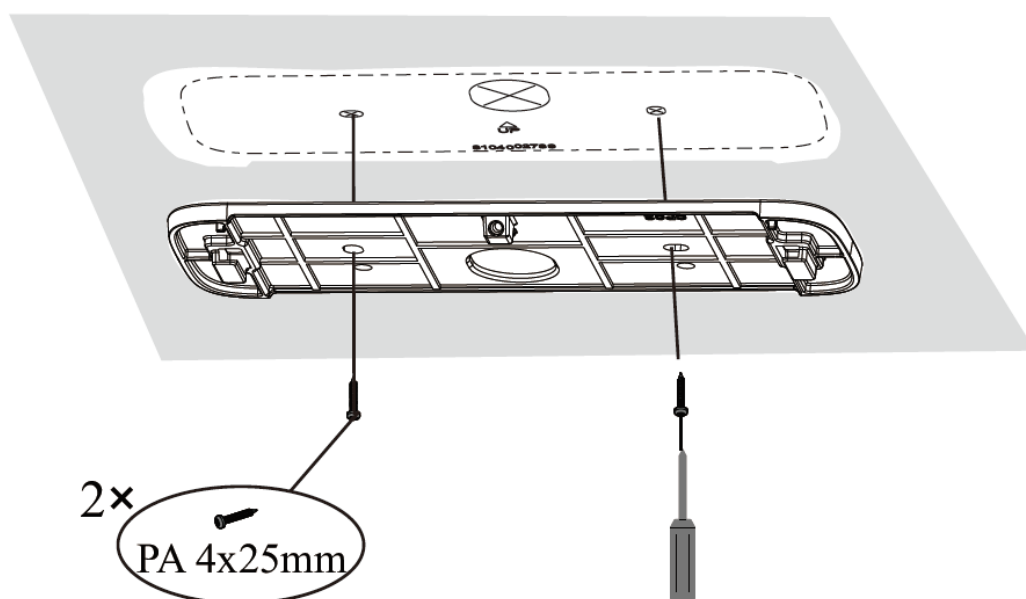
**Note:** The recommended installation height is **2 to 6 meters**. For details, see *Configuration requirements of camera and surrounding area* on page 34 in the user's manual.

---

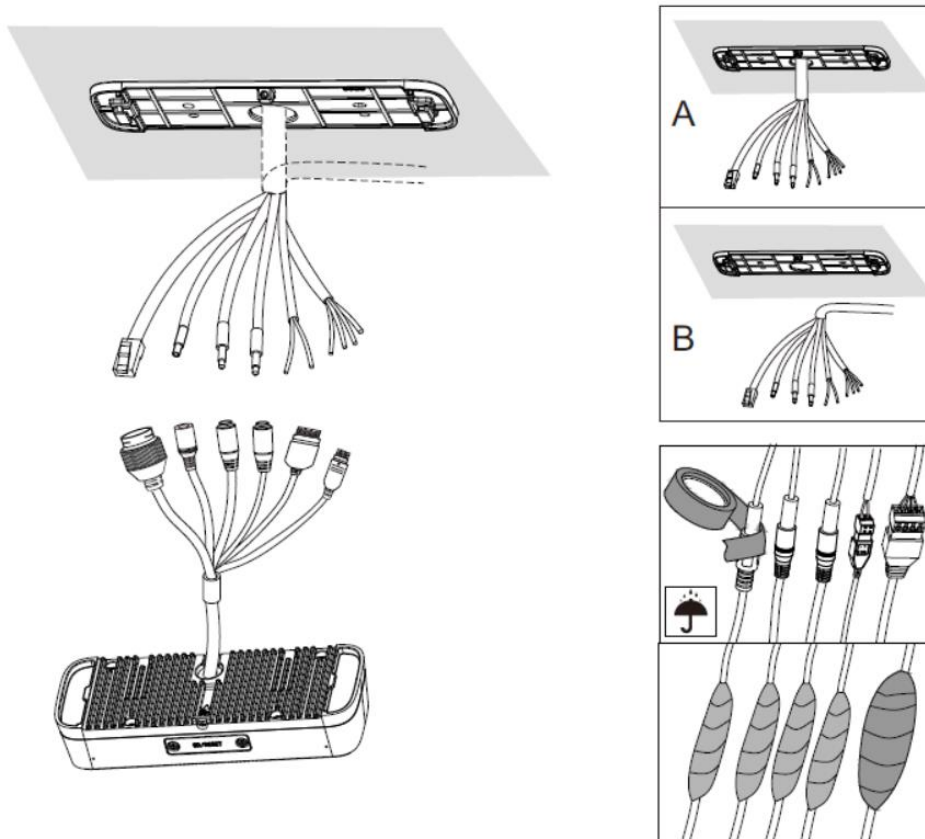
1. Loosen the set screw and then remove the mounting base from the camera.



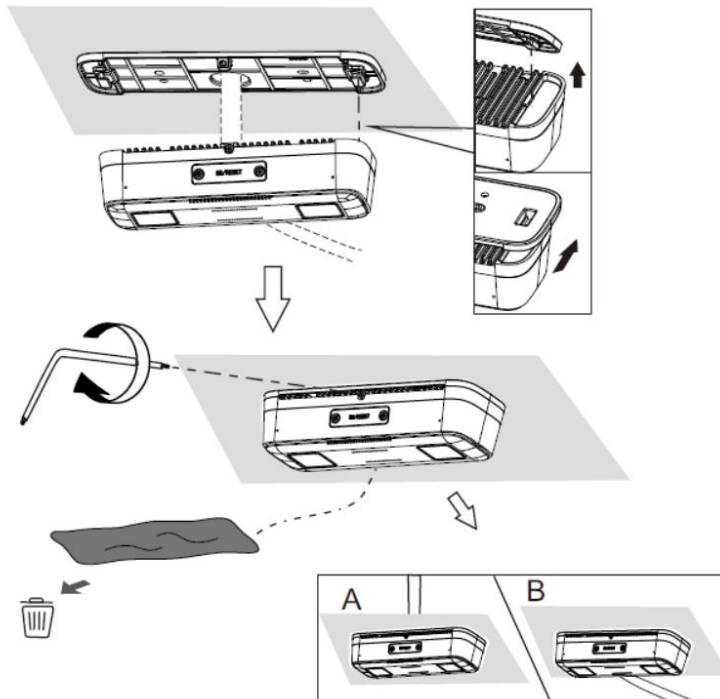
2. Drill the screw holes and the cable hole on the ceiling according to the drill template. Then install the mounting base to the ceiling with the screws provided.



3. Route the cables and connect the relevant cables.



4. Hang the camera on the mounting base and secure it firmly with the set screw. Finally, remove the protection film softly.



## 3. Accessing the Network Camera


### 3.1 Looking Up the Dynamic IP Address

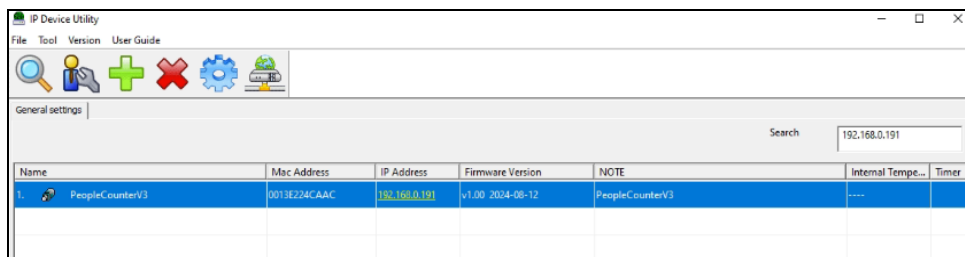
When the camera is connected to a LAN with a DHCP server, it is automatically allocated a dynamic IP address. Follow the steps below to look up its IP address, and then use that address to access its Web interface.

---

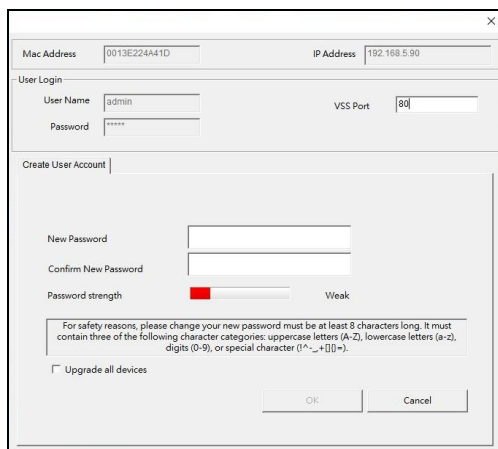
**Note:** By default, the Administrator's username is **admin** and cannot be modified.

---

1. Make sure the PC used to configure the IP address is on the same LAN as the camera. Download and install **GV-IP Device Utility** from the company [website](#).
2. On the GV-IP Utility window, click the  button to search for IP devices connected to the same LAN. To sort, click the **Name** or **Mac Address** column.
3. Find the camera with its Mac Address, and click on its IP address.



4. For first-time users, you are requested to create a password.



5. Type a new password and click **OK**.
6. Click on its IP address on the Utility window again and select **Web Page** to access its Web interface.



7. Type the set password on the login page and click **Login**.

---

**Note:** To change the password using the GV-IP Device Utility, click on the camera's IP address, and select **Configure > Change Password**. Alternatively, you can change the password on the camera's Web interface by clicking **Config > Security > User**; see "Modify User" in *3.6.1 User Configuration* in the user's manual.

---

## 3.2 Configuring the IP Address

If the camera is connected to a LAN without a DHCP server, the default IP address will be **192.168.0.10**. To avoid IP conflict with other GV-IP devices on the same LAN, configure an IP address as described below.

1. Open your Web browser, and type the default IP address **192.168.0.10**.
2. Type the default username **admin** and a password. Click **Login**.
3. Go to **Config > Network > TCP/IP** to set an IP address.
4. Select **Use the following IP address** and then enter a static IP address and other parameters.

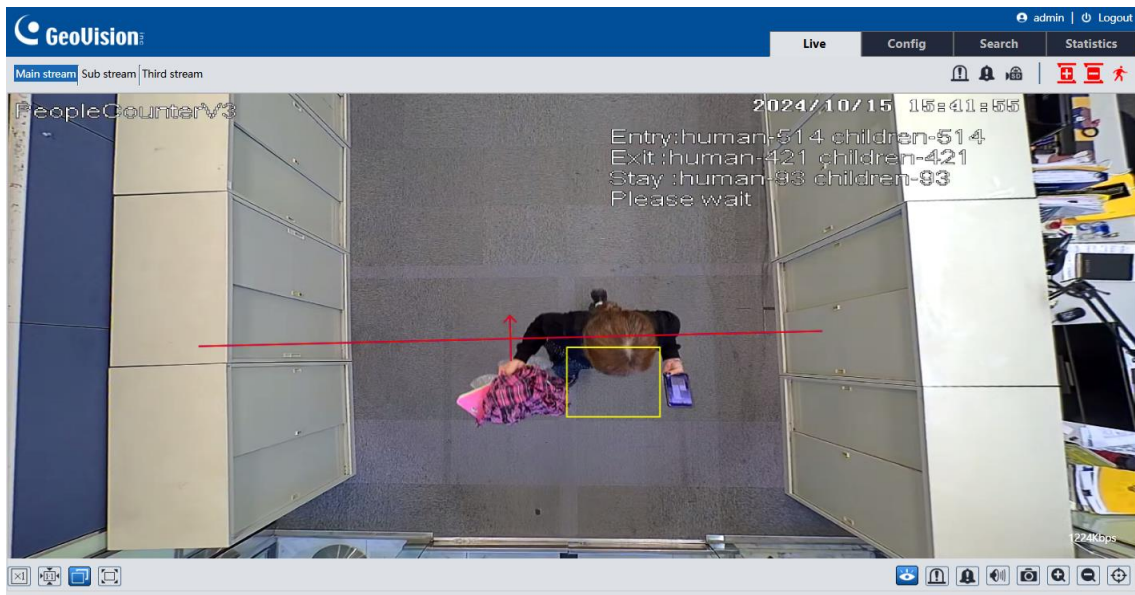
IPv4	IPv6	PPPoE Config	IP Change Notification Config
<input type="radio"/> Obtain an IP address automatically			
<input checked="" type="radio"/> Use the following IP address			
IP Address	<input type="text" value="192.168.226.201"/>	<input type="button" value="Test"/>	
Subnet Mask	<input type="text" value="255.255.255.0"/>		
Gateway	<input type="text" value="192.168.226.1"/>		
Preferred DNS Server	<input type="text" value="210.21.196.6"/>		
Alternate DNS Server	<input type="text" value="8.8.8.8"/>		








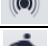














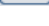

5. Click **Save**. The camera can now be accessed with the configured IP address.

## 4. The Web Interface

Once you log in the Web interface, you will see the live view as shown below.

**Note:** Two-way audio, local recording, and the preview mode switch (real-time / balanced / fluent mode) are only supported in IE mode in Microsoft Edge.



Icon	Description	Icon	Description
	Original size		Zoom out
	Fit correct scale		Rule information display
	Auto (fill the window)		SD card recording indicator
	Full screen		Sensor alarm indicator
	Start/stop live view		Motion alarm indicator
	Enable/disable alarm output		Scene change indicator
	Enable/disable audio alarm		Color abnormal indicator
	Start/stop two-way audio		Abnormal clarity indicator
	Enable/disable audio		Alarm output indicator
	Snapshot		Audio alarm indicator
	Start/stop local recording		Overcrowding alarm indicator
	Zoom in		Reverse entering alarm indicator

For detailed information, see *Chapter 2 Live View* in the user's manual.

## 5. Upgrading System Firmware

GeoVision periodically releases updated firmware on the company [website](#). To load the new firmware into the camera, follow the instructions below.

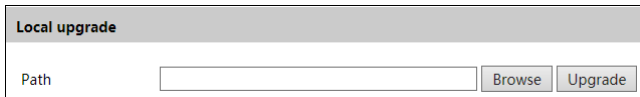
---

**Note:** Do not close the browser or disconnect the camera from the network during the upgrade.

---

### Using Camera's Web Interface

1. On the Web interface, click **Config > Maintenance > Upgrade**.



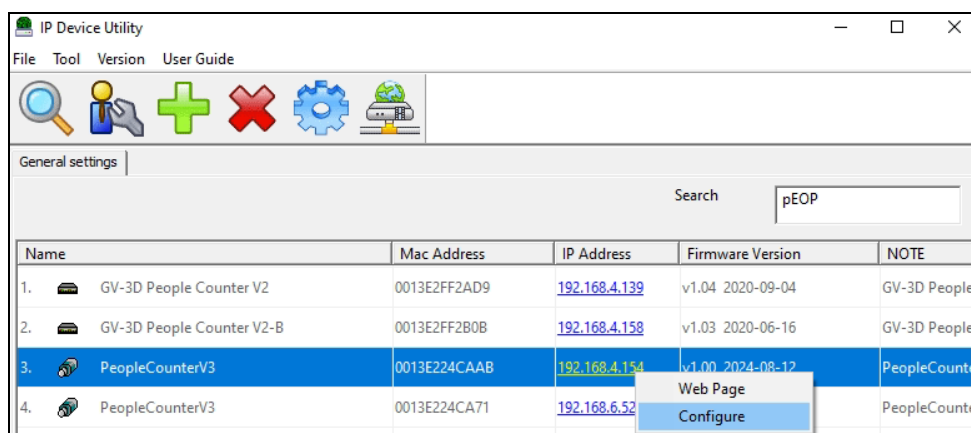
Local upgrade

Path

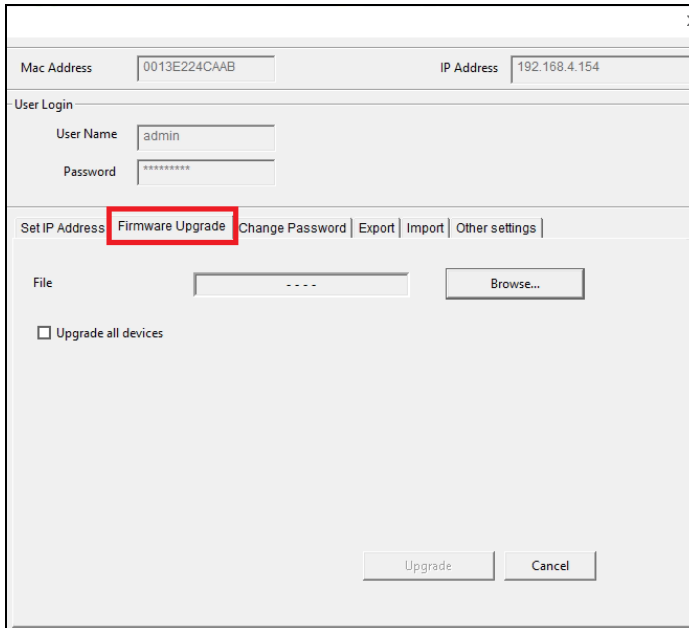
2. Click the **Browse** button to locate the firmware file saved at your local computer.
3. Click the **Upgrade** button to start upgrading the firmware.
4. After upgrading, the camera will restart automatically.

### Using GV-IP Device Utility

1. On the GV-IP Utility window, find the camera with its Mac Address, click on its IP address, and select **Configure**. The login credentials are requested.



2. Click the **Firmware Upgrade** tab, click the **Browse** button to locate the firmware file saved at your local computer.



The screenshot shows a web interface window with a close button (X) in the top right corner. At the top, there are two input fields: "Mac Address" with the value "0013E224CAAB" and "IP Address" with the value "192.168.4.154". Below these is a "User Login" section with "User Name" (admin) and "Password" (masked with asterisks). A horizontal tab bar contains five tabs: "Set IP Address", "Firmware Upgrade" (highlighted with a red box), "Change Password", "Export", and "Import", followed by "Other settings". Below the tabs, there is a "File" section with a text input field containing four asterisks and a "Browse..." button. A checkbox labeled "Upgrade all devices" is located below the file section. At the bottom of the window are two buttons: "Upgrade" and "Cancel".

3. Click the **Upgrade** button to start upgrading the firmware.
4. After upgrading, the camera will restart automatically.

## 6. Restoring to Factory Default

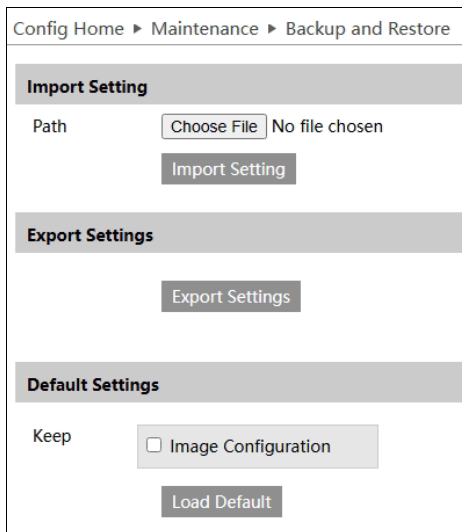
If for any reason the camera is not responding correctly, you can restore the camera back to its factory default settings using the Web interface or the Reset button.

### On the Device Main Body

1. Find the **Reset** button on the camera (see *1.1 Product Overview* in the Quick Start Guide).
2. Press and hold the button for more than 10 seconds to restore to factory default settings.

### On the Web Interface

1. On the Web interface, click **Config > Maintenance > Backup and Restore**.
2. Click the **Load Default** button to restore all system settings to factory default. Optionally, you can select and remain Image settings.



Config Home > Maintenance > Backup and Restore

**Import Setting**

Path  No file chosen

**Export Settings**

**Default Settings**

Keep ☐ Image Configuration







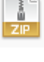





## 7. Connecting to GV-Web Report

To connect to GV-Web Report, follow the steps below.

### Installing GV-Web Report

GV-Web Report is a paid software that requires a USB dongle to function. Make sure the USB dongle is plugged to your PC.

1. Install **GV-Web Report** and **GV-Series Card Driver / GV-USB Device Driver** and from the [GeoVision website](#).




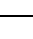
	Version History GV-Web Report	V3.0.1A	101KB			2022-06-20
	GV-Web Report	V3.0.1A	135MB			2022-06-20
	Dbsync2	V3.0.0.0	6.2MB			2018-01-05
	Content Designer (for GV-3D People Counter)	V1.0.7.0	11.1MB			2016-06-13
	GV-Series Card Driver / GV-USB Device Driver	V8.5.7.0	5.9MB			2016-12-07

2. Unzip the **GV-Series Card Driver / GV-USB Device Driver** file and select **GvUSB-x64.exe** to install the USB dongle
3. Unzip the **GV-Web Report** file and install **GV-WebReportV301A.exe**.
4. Run **GV-Web Report** (from Windows Start menu or from your desktop). For the first-time user, you must create a password (lower case only). The default account is **admin**.

### Applying the GV-Web Report Plugin Program

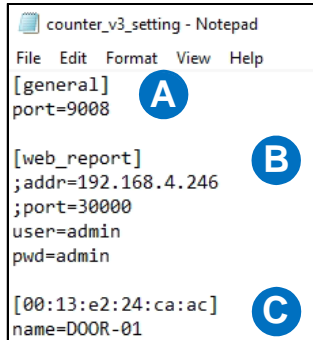
Close the GV-Web Report software before you start the following steps.

5. Download and unzip the plugin program from the [link](#).
6. Copy and paste the four files into the GV-Web Report installation folder (default location: C:\Program Files (x86)\GeoVision\GV-WebReport).

Name	Type	Compressed size
 counter_v3	Application	17 KB
 counter_v3_setting	Configuration settings	1 KB
 GeoDataClient.dll	Application extension	100 KB
 libv3counter.dll	Application extension	93 KB

## Configuring a GV-3D People Counter V3 in GV-Web Report

7. Navigate to the GV-Web Report Installation folder, locate and open the file named **counter\_v3\_settings**.
8. Configure the following settings on the notepad:



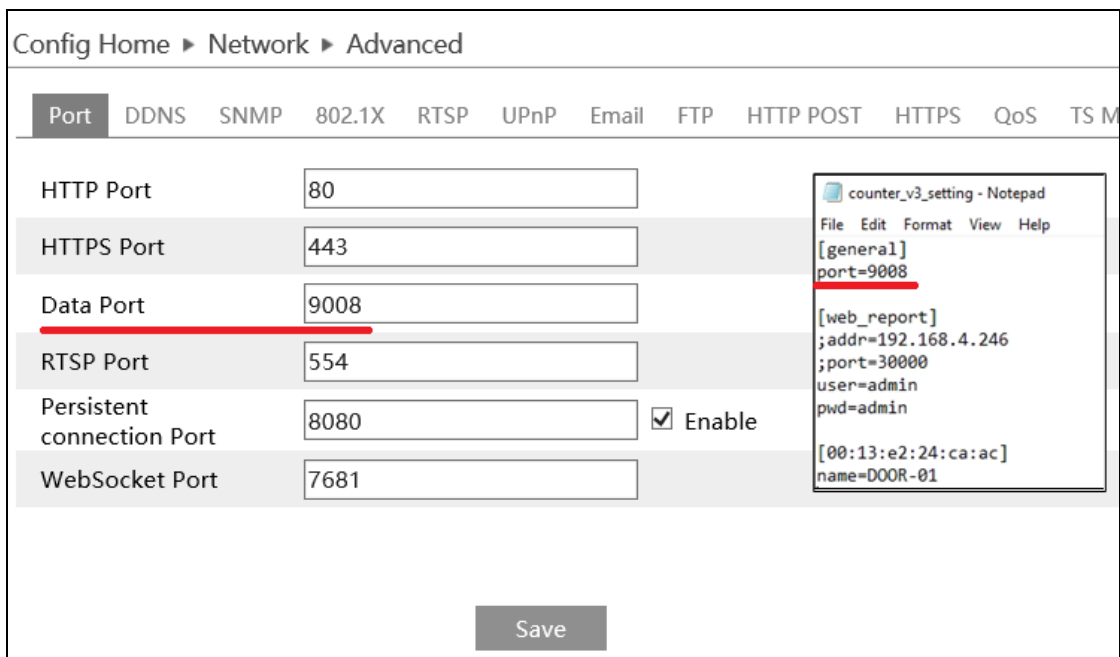
```

counter_v3_setting - Notepad
File Edit Format View Help
[general]
port=9008

[web_report]
;addr=192.168.4.246
;port=30000
user=admin
pwd=admin

[00:13:e2:24:ca:ac]
name=DOOR-01
  
```

- A. **[general]**: Edit the port value to receive counting data. The [general] port should match the Data Port in the GV-3D People Counter V3.



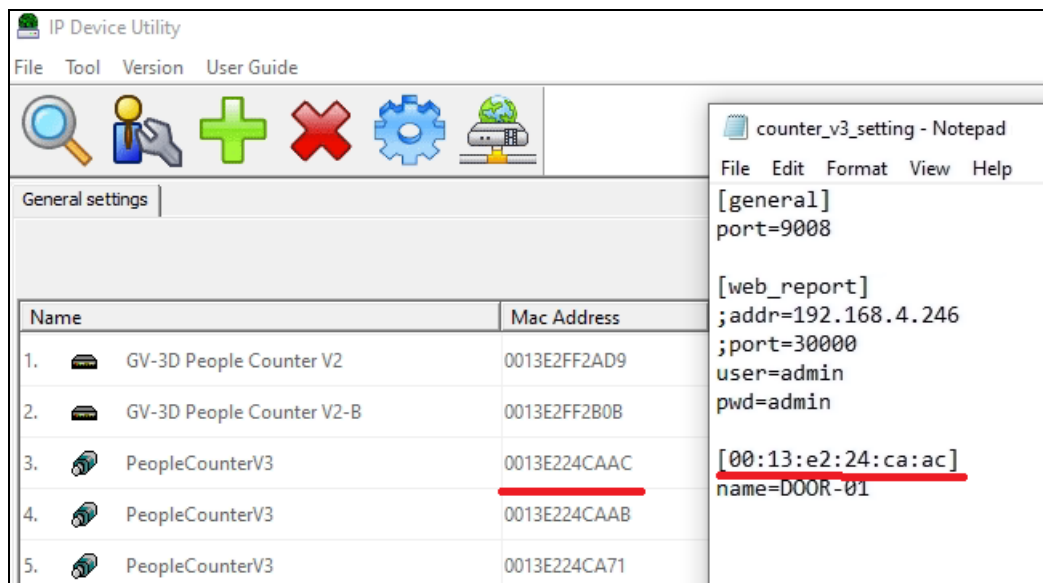
Config Home ► Network ► Advanced

Port	DDNS	SNMP	802.1X	RTSP	UPnP	Email	FTP	HTTP POST	HTTPS	QoS	TS M
HTTP Port											
HTTPS Port											
Data Port											
RTSP Port											
Persistent connection Port											
WebSocket Port											

Save

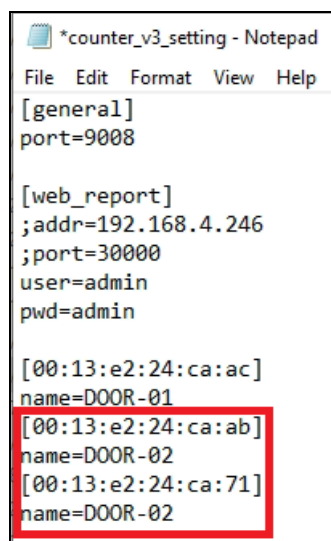
**Note:** If the GV-Web Report server and GV-3D People Counter V3 are on different LANs, make sure to configure port forwarding on the GV-Web Report server to open the above port to the public internet.

- B. **[web\_report]**: Edit the IP address, login user name and password of the GV-Web Report. Unless you change the listen port in the GV-Web Report, keep the port at 30000.
- C. **[00:13:e2:24:ca:ac]**: Edit the MAC address of the GV-3D People Counter V3.  
**name=DOOR-01**: Give a desired name for the GV-3D People Counter V3 displayed in the GV-Web Report, e.g. DOOR-01.



**Note:** You may use GV-IP Device Utility to find out the device's MAC address.

To add more than one GV-3D People Counter V3, add more Mac addresses and names like this:



9. Click **File > Save** to save the settings to the counter\_v3\_setting file.
10. Navigate to the GV-Web Report installation folder, locate and run **counter\_v3.exe**. This window appears.



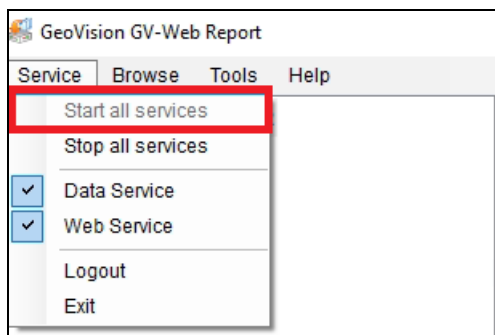
---

**IMPORTANT:** Keep the window open in the background so that the plugin program can run. Every time when you restart the computer, the **counter v3 exe** from the GV-Web Report installation folder must be enabled in order for GV-Web Report to function.

---

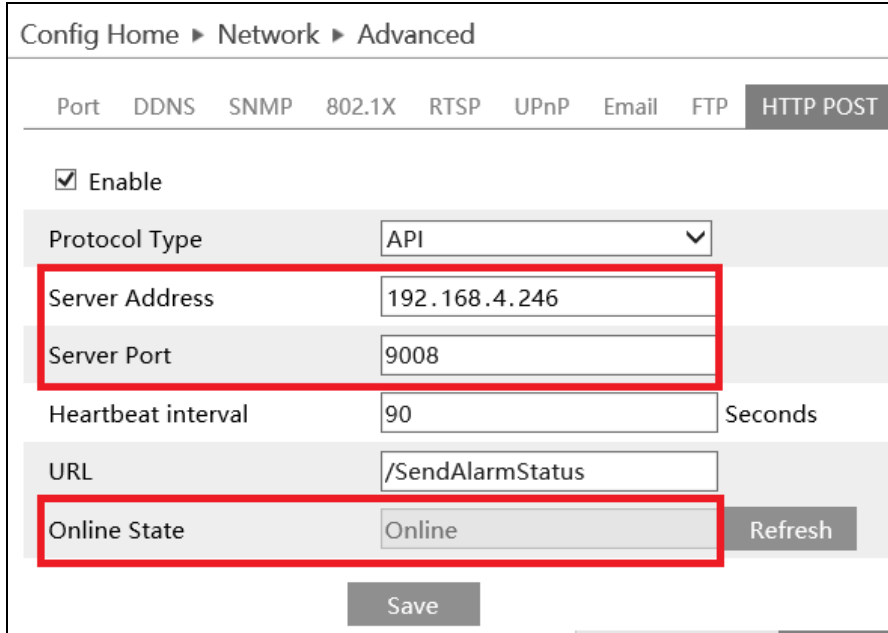
### Connecting a GV-3D People Counter V3 to GV-Web Report

11. Make sure all services on the GV-Web Report are started.



12. On the Web interface of the GV-3D People Counter V3, go to **Config > Network > HTTP POST**.

13. Type the GV-Web Report Server's IP address for **Server Address** and the Data Port for **Server Port** (configured in Step 7-A), and click **Save**.
14. Click the **Refresh** button next to Online State, and it should change from Offline to **Online**.



Config Home ► Network ► Advanced

Port DDNS SNMP 802.1X RTSP UPnP Email FTP **HTTP POST**

☒ Enable

Protocol Type API

Server Address 192.168.4.246

Server Port 9008

Heartbeat interval 90 Seconds

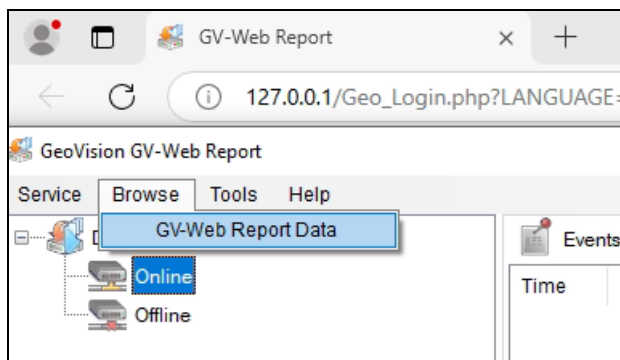
URL /SendAlarmStatus

Online State Online Refresh

Save

### Accessing Counting Data on GV-Web Report

15. On the GV-Web Report server, click **Browse > GV-Web Report Data**.



16. You are required to enter the login credentials. The GV-Web Report -People Counting page appears.

17. To enable counting people, activate the GV-3D People Counter V3 at least once. The GV-3D People Counter V3 device, named DOOR-01, appears on the page.

